

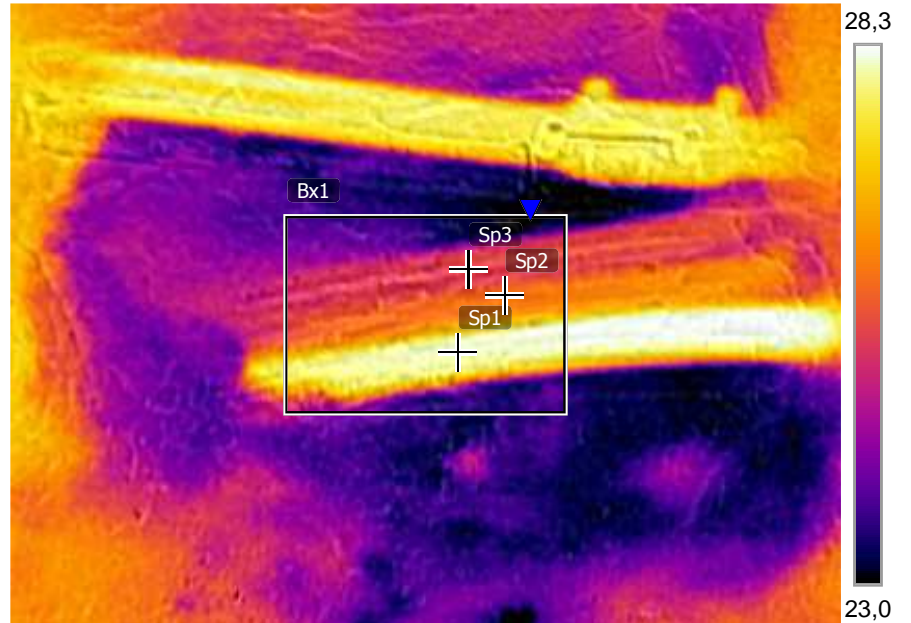
Misurazioni

Bx1	Min	22,9 °C
Sp1		28,1 °C
Sp2		25,5 °C
Sp3		25,0 °C

Parametri

Emissività	0.95
Temp. rifl.	20 °C

18/07/2017 21:08:31



FLIR0136.jpg

FLIR E40

64520865

18/07/2017 21:08:31



FLIR0136.jpg

FLIR E40

64520865

18/08/2017 10:07:28



FLIR0136-...